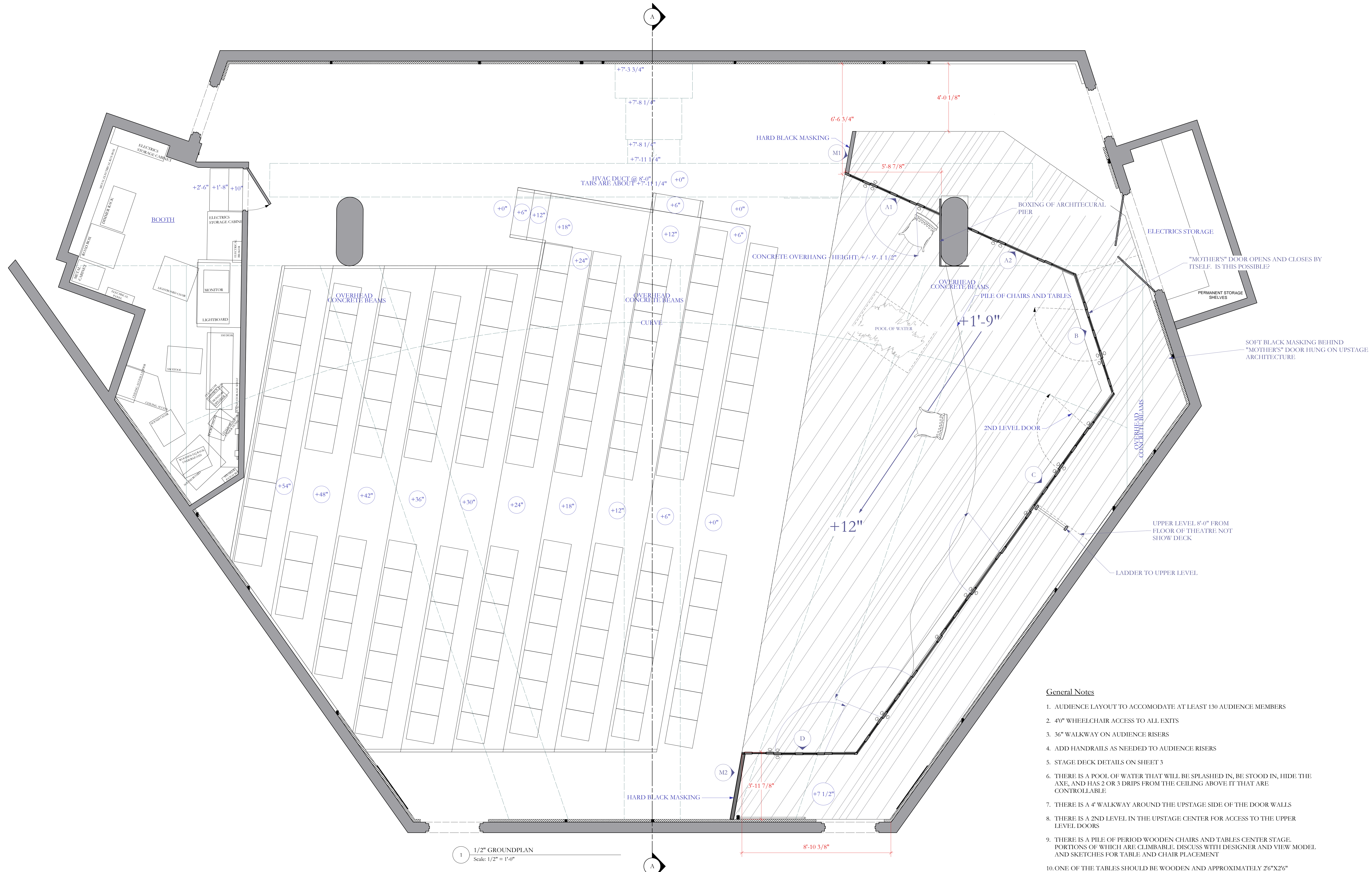


CRIME AND PUNISHMENT

# CRIME AND PUNISHMENT

THE REPERTORY THEATRE OF ST. LOUIS, STUDIO THEATRE  
 ARTISTIC DIRECTOR: STEVEN WOOLF, PRODUCTION MANAGER: EDWARD COFFIELD, DIRECTOR: STUART CARDEN,  
 SCENIC DESIGNER: GIANNI DOWNS, COMPOSER AND SOUND DESIGNER: ANDRE PLESS, LIGHTING DESIGNER:  
 BRIAN SIDNEY BEMBRIDGE, TECHNICAL DIRECTOR: NICHELLE KRAMLICH

1/2" SCALE GROUNDPLAN



1 1/2" GROUNDPLAN  
 Scale: 1/2" = 1'-0"

**General Notes**

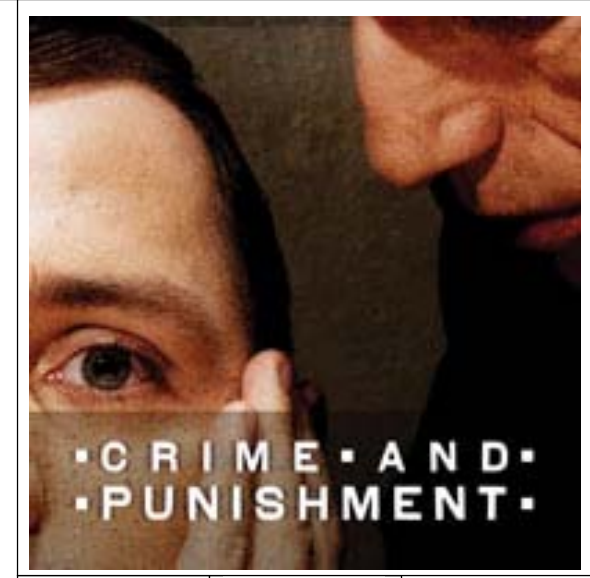
1. AUDIENCE LAYOUT TO ACCOMMODATE AT LEAST 150 AUDIENCE MEMBERS
2. 40" WHEELCHAIR ACCESS TO ALL EXITS
3. 36" WALKWAY ON AUDIENCE RISERS
4. ADD HANDRAILS AS NEEDED TO AUDIENCE RISERS
5. STAGE DECK DETAILS ON SHEET 3
6. THERE IS A POOL OF WATER THAT WILL BE SPLASHED IN, BE STOOD IN, HIDE THE AXE, AND HAS 2 OR 3 DRIPS FROM THE CEILING ABOVE IT THAT ARE CONTROLLABLE
7. THERE IS A 4" WALKWAY AROUND THE UPSTAGE SIDE OF THE DOOR WALLS
8. THERE IS A 2ND LEVEL IN THE UPSTAGE CENTER FOR ACCESS TO THE UPPER LEVEL DOORS
9. THERE IS A PILE OF PERIOD WOODEN CHAIRS AND TABLES CENTER STAGE. PORTIONS OF WHICH ARE CLIMBABLE. DISCUSS WITH DESIGNER AND VIEW MODEL AND SKETCHES FOR TABLE AND CHAIR PLACEMENT
10. ONE OF THE TABLES SHOULD BE WOODEN AND APPROXIMATELY 26"X26"

DRAFTED BY: GIANNI DOWNS  
 412-779-7498, GIANNIDOWNS@GMAIL.COM  
 WWW.GIANNIDESIGNS.NET

DRAFTED ON: JANUARY 1, 2010  
 REVISIONS:  
 JANUARY 11, 2010  
 FEBRUARY 1, 2010

PLATE #

1



• CRIME AND PUNISHMENT •

# CRIME AND PUNISHMENT

THE REPERTORY THEATRE OF ST. LOUIS, STUDIO THEATRE

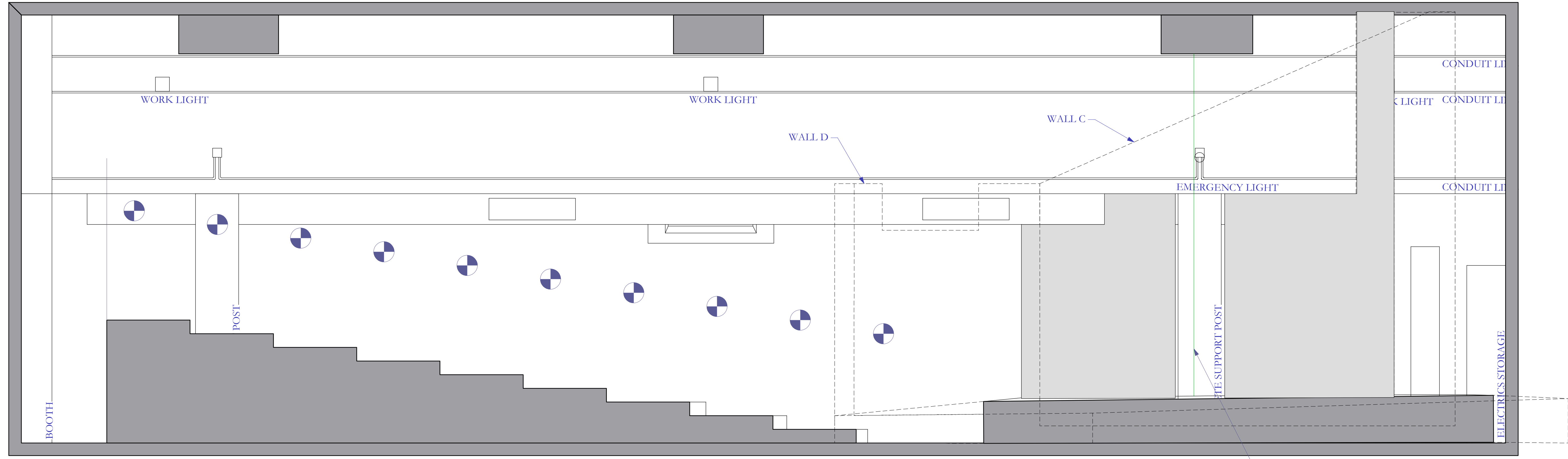
ARTISTIC DIRECTOR: STEVEN WOOLF, PRODUCTION MANAGER: EDWARD COFFIELD, DIRECTOR:  
STUART GARDEN, SCENIC DESIGNER: GIANNI DOWNS, COMPOSER AND SOUND DESIGNER: ANDRE PLOESS,  
LIGHTING DESIGNER: BRIAN SIDNEY BEMBRIDGE, TECHNICAL DIRECTOR: NICHELLE KRAMLICH

DRAFTED BY: GIANNI DOWNS  
412-779-7498,  
GIANNIDOWNS@GMAIL.COM  
WWW.GIANNIDESIGNS.NET

DRAFTED ON: JANUARY 1, 2010  
REVISIONS:  
JANUARY 11, 2010  
FEBRUARY 1, 2010

PLATE #

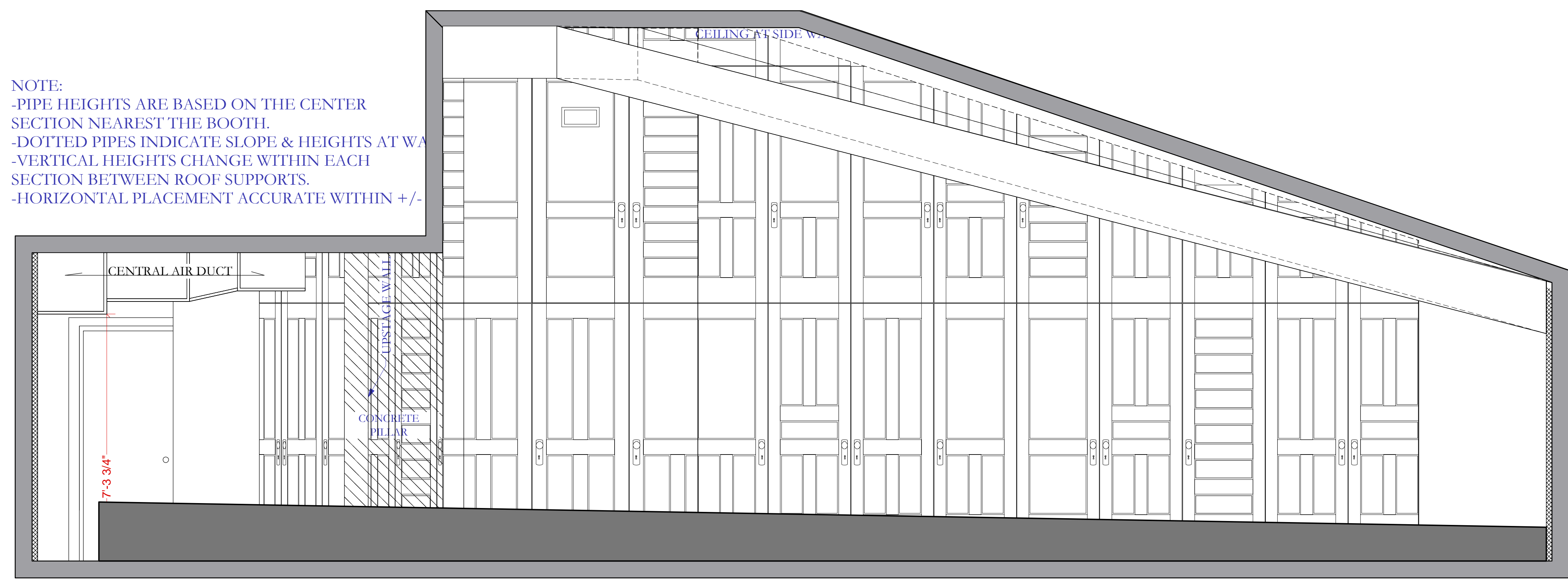
# 2



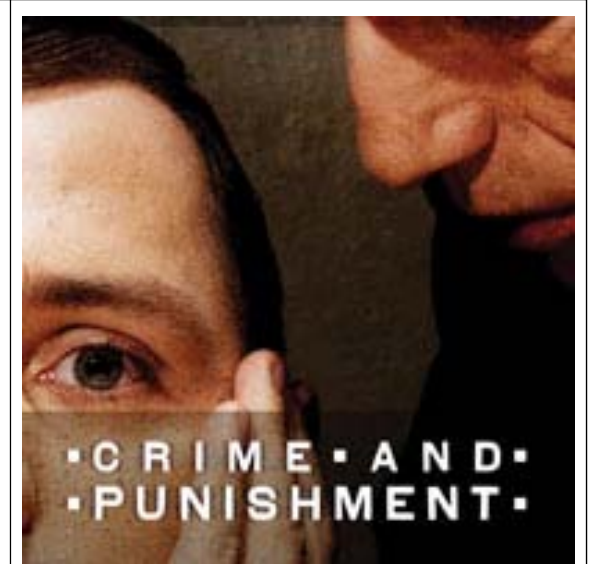
1 SECTION B-B  
Scale: 1/2" = 1'-0"

APPROXIMATE PLACEMENT OF PAINTED  
WET/LEAK ALONG ARCHITECTURE OF  
THEATRE

NOTE:  
-PIPE HEIGHTS ARE BASED ON THE CENTER  
SECTION NEAREST THE BOOTH.  
-DOTTED PIPES INDICATE SLOPE & HEIGHTS AT WALL  
-VERTICAL HEIGHTS CHANGE WITHIN EACH  
SECTION BETWEEN ROOF SUPPORTS.  
-HORIZONTAL PLACEMENT ACCURATE WITHIN +/-



2 SECTION A-A  
Scale: 1/2" = 1'-0"



**CRIME AND PUNISHMENT**  
 THE REPERTORY THEATRE OF ST. LOUIS, STUDIO THEATRE  
 ARTISTIC DIRECTOR: STEVEN WOOLF, PRODUCTION MANAGER: EDWARD COFFIELD, DIRECTOR:  
 STUART CARDEN, SCENIC DESIGNER: GIANNI DOWNS, COMPOSER AND SOUND DESIGNER: ANDRE PLUSS,  
 LIGHTING DESIGNER: BRIAN SIDNEY BEMBRIDGE, TECHNICAL DIRECTOR: NICHELLE KRAMLICH

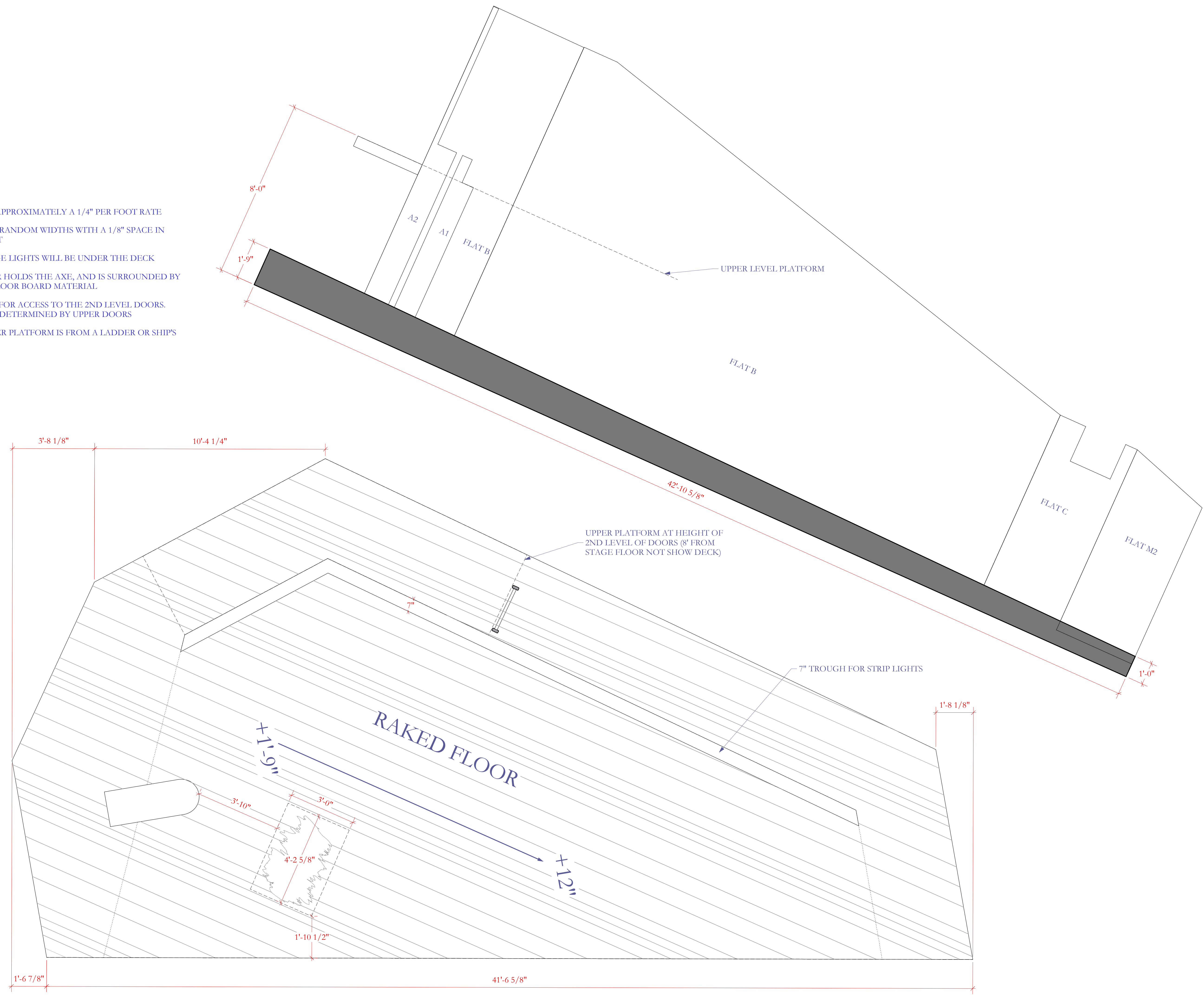
DRAFTED BY: GIANNI DOWNS  
 412-779-7498,  
 GIANNIDOWNS@GMAIL.COM  
 WWW.GIANNIDESIGNS.NET

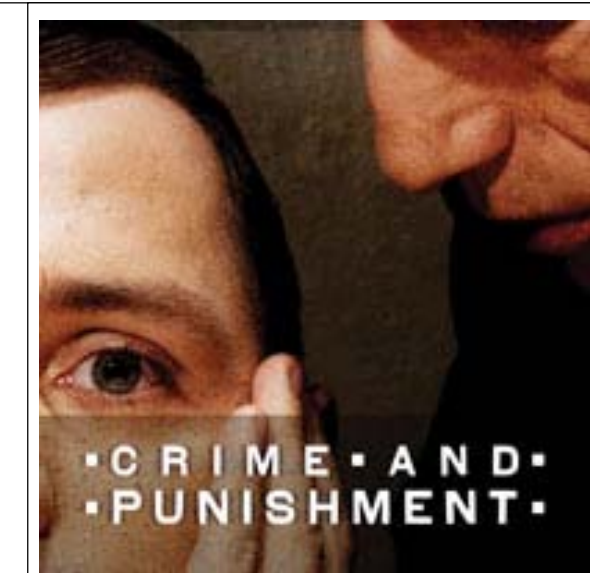
DRAFTED ON: JANUARY 1, 2010  
 REVISIONS:  
 JANUARY 11, 2010  
 FEBRUARY 1, 2010

PLATE #  
**3**

General Notes

1. STAGE IS RAKED AT APPROXIMATELY A 1/4" PER FOOT RATE
2. FLOOR BOARDS ARE RANDOM WIDTHS WITH A 1/8" SPACE IN BETWEEN FOR LIGHT
3. POSSIBLE THAT STAGE LIGHTS WILL BE UNDER THE DECK
4. THE POOL OF WATER HOLDS THE AXE, AND IS SURROUNDED BY ROTTED/WARPED FLOOR BOARD MATERIAL
5. UPPER PLATFORM IS FOR ACCESS TO THE 2ND LEVEL DOORS. HEIGHT SHOULD BE DETERMINED BY UPPER DOORS
6. ACCESS TO THE UPPER PLATFORM IS FROM A LADDER OR SHIP'S LADDER SR



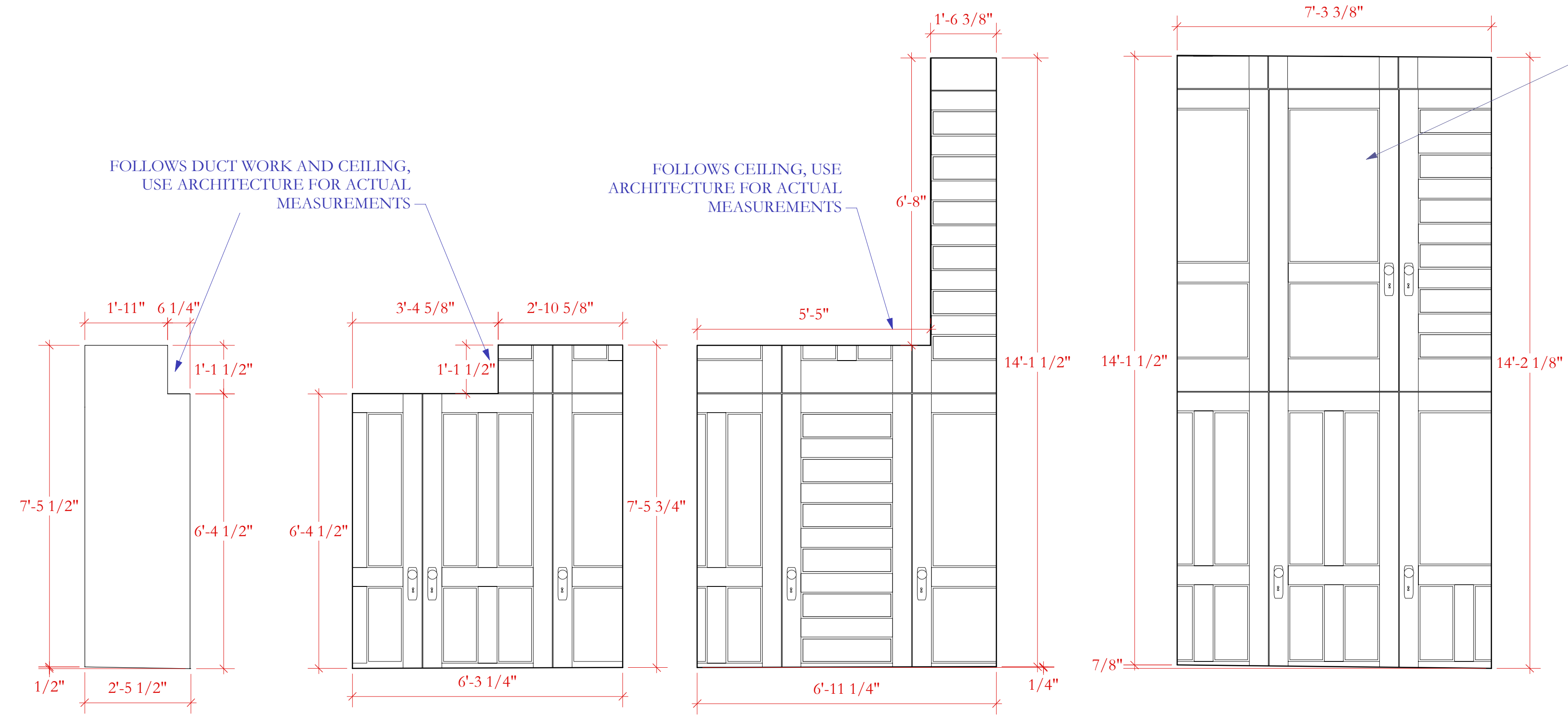


**CRIME AND PUNISHMENT**  
 THE REPERTORY THEATRE OF ST. LOUIS, STUDIO THEATRE  
 ARTISTIC DIRECTOR: STEVEN WOOLF, PRODUCTION MANAGER: EDWARD COFFIELD, DIRECTOR: STUART CARDEN, SCENIC DESIGNER: GIANNI DOWNS, COMPOSER AND SOUND DESIGNER: ANDRE PLEUSS, LIGHTING DESIGNER: BRIAN SIDNEY BEMBRIDGE, TECHNICAL DIRECTOR: NICHELLE KRAMLICH

DRAFTED BY: GIANNI DOWNS  
 412-779-7498,  
 GIANNIDOWNS@GMAIL.COM  
 WWW.GIANNIDESIGNS.NET

DRAFTED ON: JANUARY 1, 2010  
 REVISIONS:  
 JANUARY 11, 2010  
 FEBRUARY 1, 2010

PLATE #  
**4**  
 OF 4

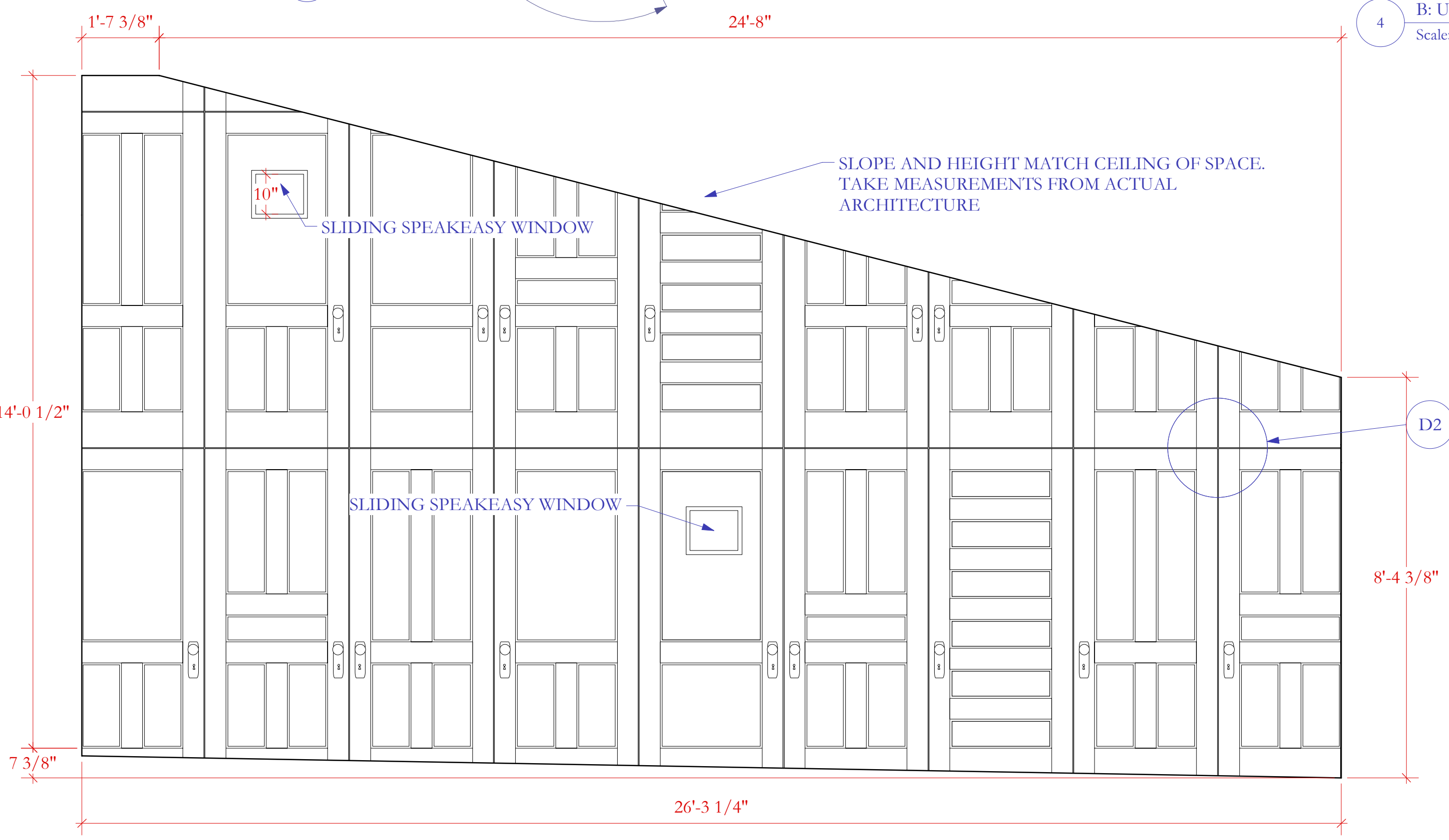


1 M1: MASKING FLAT  
 Scale: 1/2" = 1'-0"

2 A1: SR DOOR WALL  
 Scale: 1/2" = 1'-0"

3 A2: SR DOOR WALL  
 Scale: 1/2" = 1'-0"

4 B: USR DOOR WALL  
 Scale: 1/2" = 1'-0"



7 C: USL DOOR WALL  
 Scale: 1/2" = 1'-0"

8 D: SL DOOR WALL  
 Scale: 1/2" = 1'-0"

5 D2: DOOR SPACING  
 Scale: 1 1/2" = 1'-0"

6 TYPICAL DOOR  
 Scale: 1" = 1'-0"

9 M2: MASKING WALL  
 Scale: 1/2" = 1'-0"

10 SR PIER COVERING  
 Scale: 1/2" = 1'-0"

**General Notes**

1. ALL HEIGHTS OF DOOR WALLS GO TO ARCHITECTURAL CEILINGS, BEAMS, DUCTWORK, ETC. MEASUREMENTS GIVEN ARE APPROXIMATE ONLY. TAKE MEASUREMENTS FROM ACTUAL ARCHITECTURE FOR ALL HEIGHTS AND CUTOUTS.
2. DOOR WALLS ARE COMPRISED OF OLD WOODEN DOORS. VARIETY IN SIZES, SHAPES, AND STYLES IS IDEAL. DRAWINGS INDICATE APPROXIMATE SIZES AND PLACEMENTS
3. THE TOPS OF THE FIRST LEVEL OF DOORS SHOULD BE IN LINE WITH EACH OTHER. USE SHORTER DOORS SR WORKING THROUGH TO SL.
4. THERE IS A 1/4" GAP AROUND ALL DOORS TO ALLOW FOR LIGHT LEAKS
5. THERE IS A SPEAKEASY SLIDING WINDOW IN THE UPPER LEVEL OF WALL C
6. MASKING FLATS ARE HARD COVERED FLATS WITH A DUVETYN SKIN
7. SR 2ND LEVEL DOOR IS "MOTHER'S" DOOR. IT SHOULD OPEN AND CLOSE BY ITSELF

TYPICAL THEATRICAL DOOR, USE RECLAIMED OR OLD DOORS DIFFERENCE IN SIZES IS OKAY

TEXTURED AND PAINTED TO MATCH THE CONCRETE OF THE WALL ABOVE