

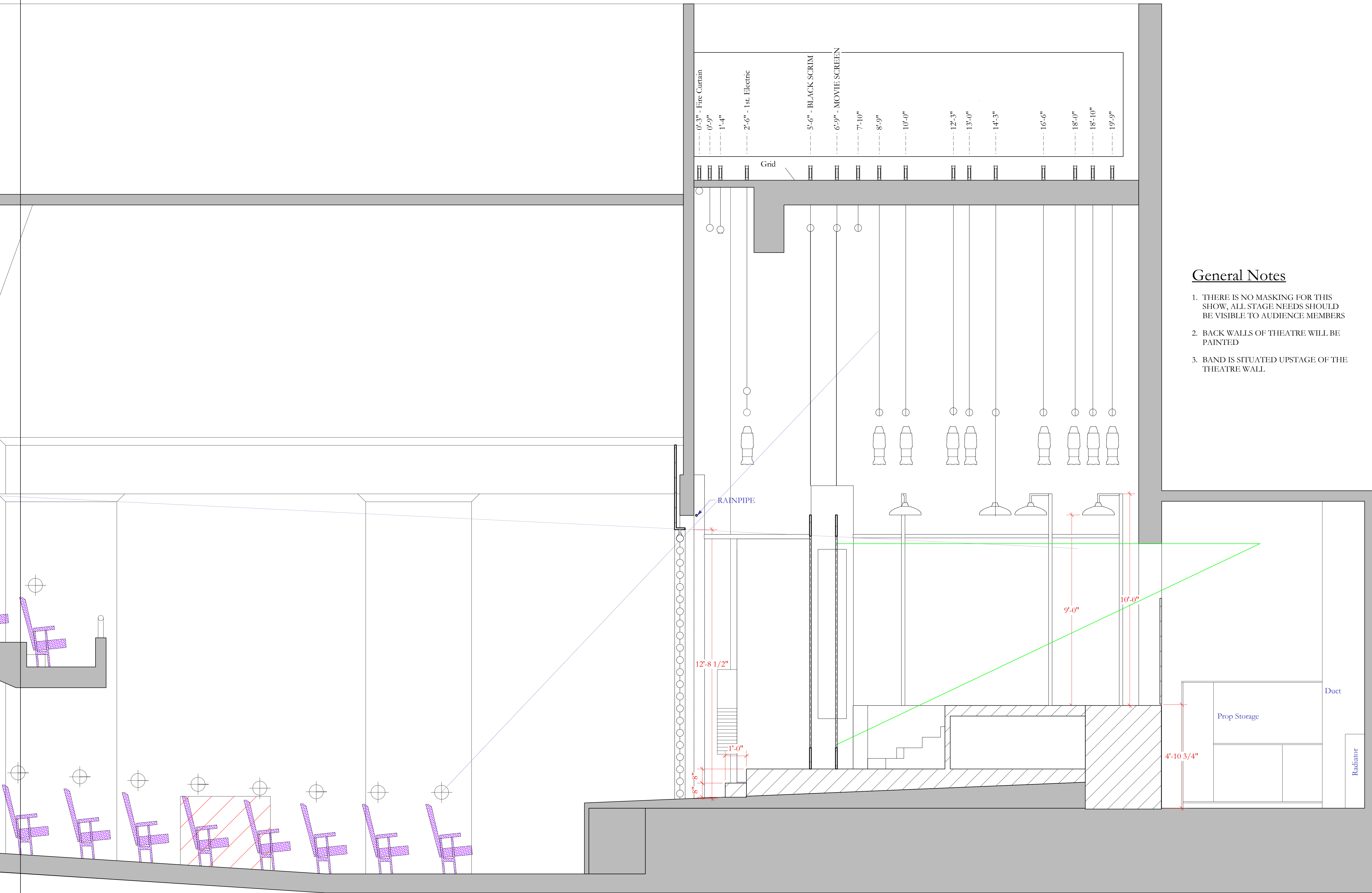
General Notes

1. BOOM PLACEMENTS ARE SUGGESTIONS ONLY
2. FLOOR IS TO BE TREATED FOR RAIN AND TO PREVENT SLIPS
3. THERE IS A RAIN PIPE ALONG THE UPSTAGE SIDE OF THE FIRE CURTAIN
4. USE EXISTING 1/2" RAKE AS A BASE AND BUILD ON TOP OF IT FOR ALL ELEMENTS
5. THERE IS A GRATE CUT IN THE DS PORTION OF THE DECK TO COLLECT RAIN
6. ESCAPE STAIRS WERE DESIGNED TO HELP MAXIMIZE SPACE FOR MOVEMENT, SUGGESTIONS ARE ENCOURAGED
7. LINESETS 4 AND 5 FLY DURING THE SHOW

THE ROCKY HORROR SHOW
 POINT PARK CONSERVATORY RAUH THEATRE, PRODUCTION MANAGER: KIM MARTIN
 DIRECTED BY SCOTT WISE, MUSICAL DIRECTOR: CAMILLE ROLLA, CHORIOGRAPHER: JEREMY CZARRIAK
SCENIC GROUND PLAN
 SCALE 1/2"=1'-0"

DESIGNER: GIANNIDOWNS 412-779-7498
 GIANNIDOWNS@GMAIL.COM
 WWW.GIANNIDOWNSDESIGNS.NET
 DRAFTED: JANUARY 30, 2009
 REVISED ON: FEBRUARY 3, 2009
 FEBRUARY 13, 2009
 FEBRUARY 23, 2009

PLATE:
1
 OF 6



General Notes

1. THERE IS NO MASKING FOR THIS SHOW, ALL STAGE NEEDS SHOULD BE VISIBLE TO AUDIENCE MEMBERS
2. BACK WALLS OF THEATRE WILL BE PAINTED
3. BAND IS SITUATED UPSTAGE OF THE THEATRE WALL

THE ROCKY HORROR SHOW

POINT PARK CONSERVATORY RAUH THEATRE, PRODUCTION MANAGER: KIM MARTIN
 DIRECTED BY SCOTT WISE, MUSICAL DIRECTOR: CAMILLE ROLLÁ, CHOREOGRAPHER: JEREMY CZARRIAK

CENTERLINE SECTION

SCALE 1/2"=1'-0"

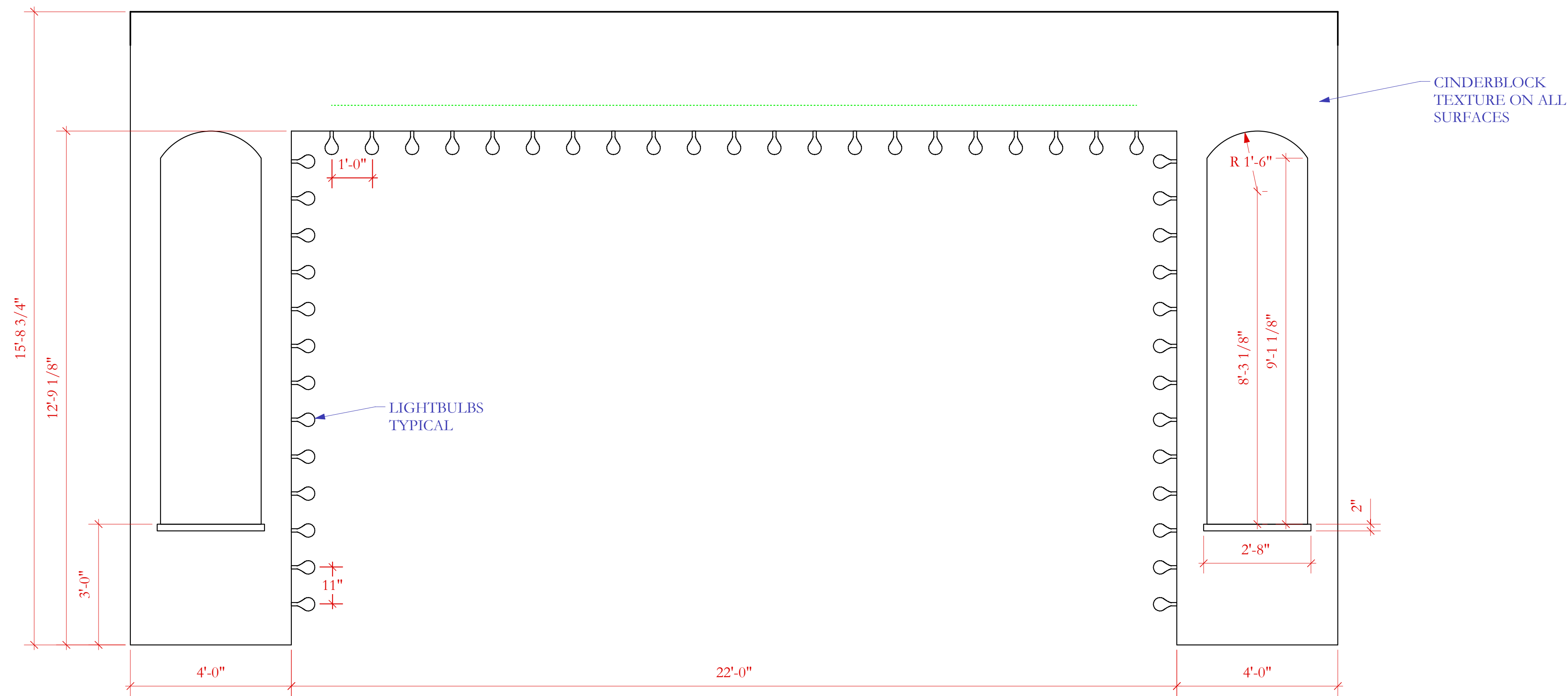
DESIGNER: GIANNI DOWNS 412-779-7498
 GIANNIDOWNS@GMAIL.COM
 WWW.GIANNIDOWNS.NET

DRAFTED: JANUARY 30, 2009
 REVISED ON: FEBRUARY 3, 2009
 FEBRUARY 13, 2009
 FEBRUARY 23, 2009

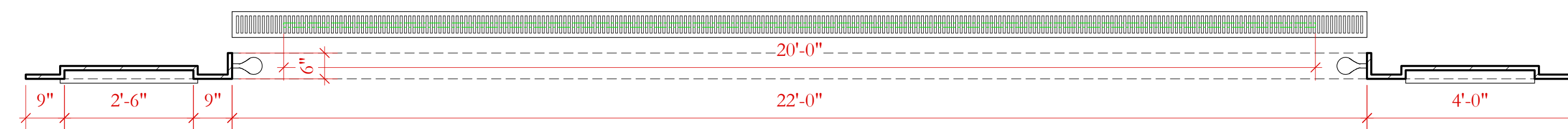
PLATE:

2

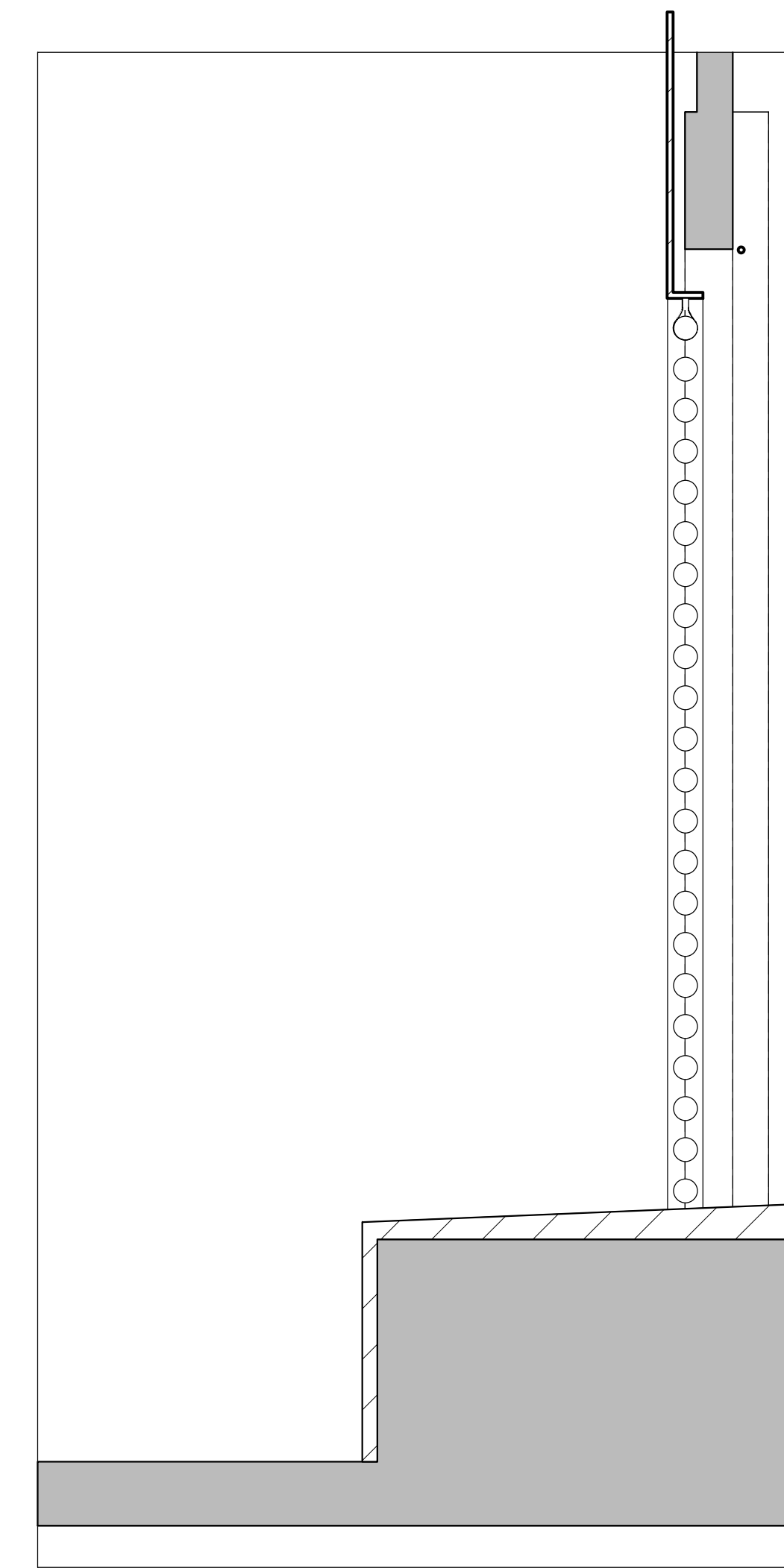
OF 6



1 FALSE PROSCENIUM ELEVATION
Scale: 1/2" = 1'-0"



3 FALSE PROSCENIUM PLAN
Scale: 1/2" = 1'-0"



2 FALSE PROSCENIUM SECTION
Scale: 1/2" = 1'-0"

General Notes

1. PROSCENIUM WILL HAVE A CINDERBLOCK TEXTURE
2. ACTORS WILL LIVE BEHIND THE PROSCENIUM WALLS AND ANIMATE THROUGH SPECIFIC HOLES--DESIGN TBD
3. NOTICE LIGHTING SLOTS IN SIDE AND UPPER PROSCENIUM, DISCUSS NEEDS WITH LIGHTING DESIGNER
4. REFLECTORS FOR THE 5 FOOTLIGHTS SHOULD BE MADE OF FOUND METAL OBJECTS--DISCUSS WITH DESIGNER
5. ACTORS WILL TRAVEL INTO THE AUDIENCE USING BOTH THE SL AND DSR STAIRS
6. SL AND DSR STAIRS TO BE PAINTED BLACK TO MATCH EXISTING ARCHITECTURE
7. LIGHTBULBS IN PROSCENIUM ARE PRACTICAL AND LOOK SHOULD BE DETERMINED BY LIGHTING AND SCENIC DESIGNERS

THE ROCKY HORROR SHOW

POINT PARK CONSERVATORY RAUH THEATRE, PRODUCTION MANAGER: KIM MARTIN
DIRECTED BY SCOTT WISE, MUSICAL DIRECTOR: CAMILLE ROLLA, CHOREOGRAPHER: JEREMY CZARRIAK

FALSE PROSCENIUM

SCALE 1/2"=1'-0"

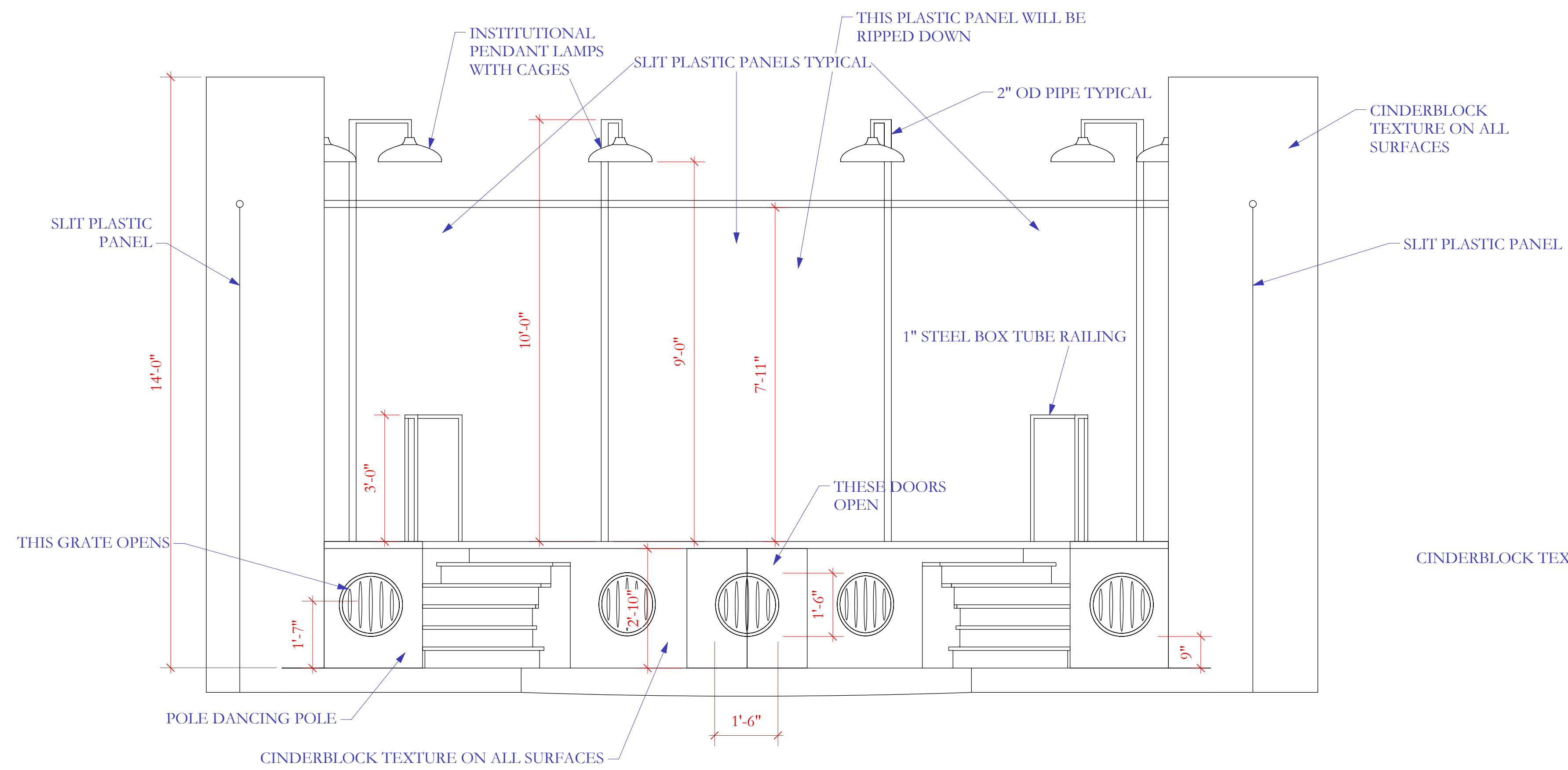
DESIGNER: GIANNI DOWNS 412-779-7498
GIANNIDOWNS@GMAIL.COM
WWW.GIANNIDESIGNS.NET

DRAFTED: JANUARY 30, 2009
REVISED ON: FEBRUARY 3, 2009
FEBRUARY 13, 2009
FEBRUARY 23, 2009

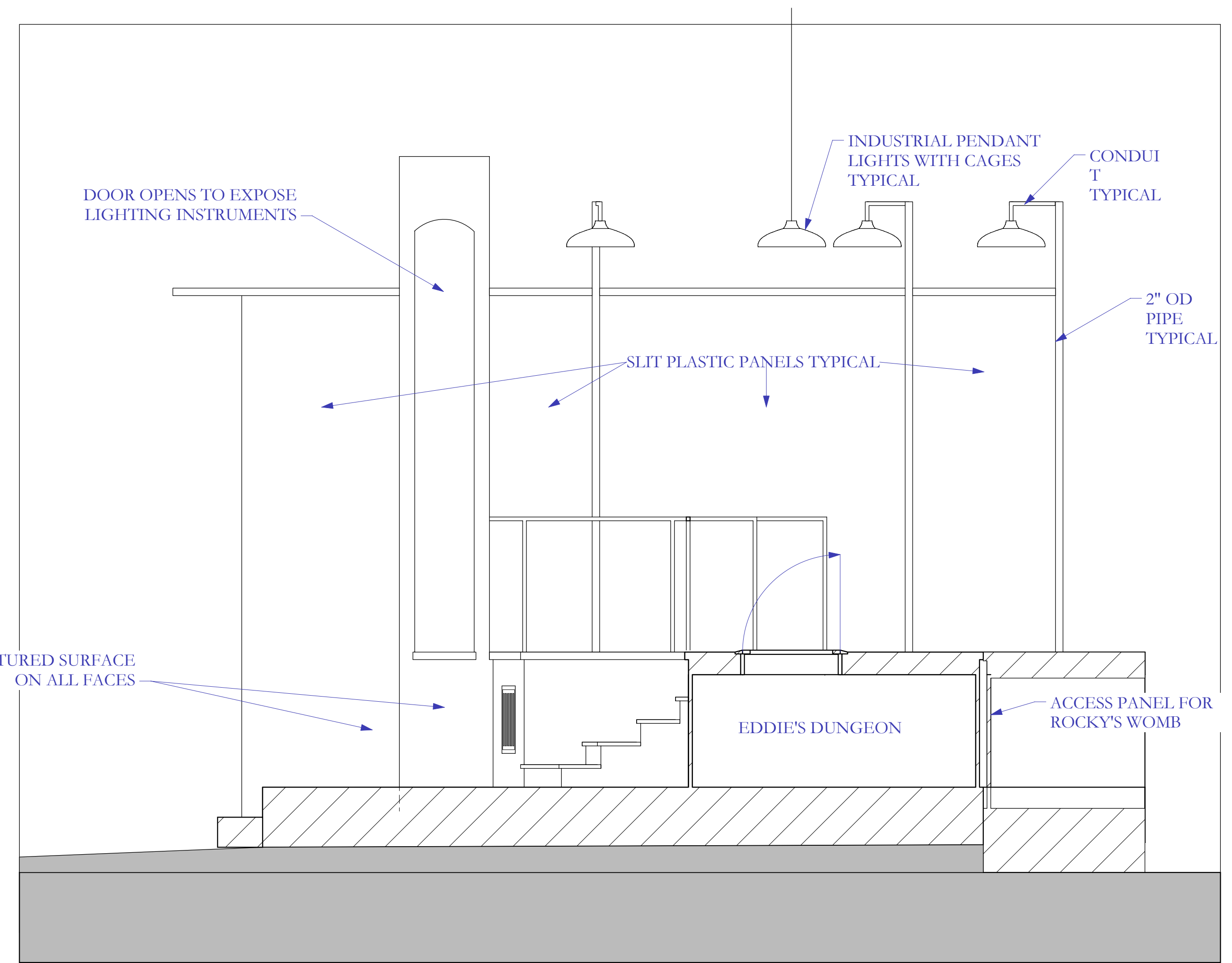
PLATE:

4

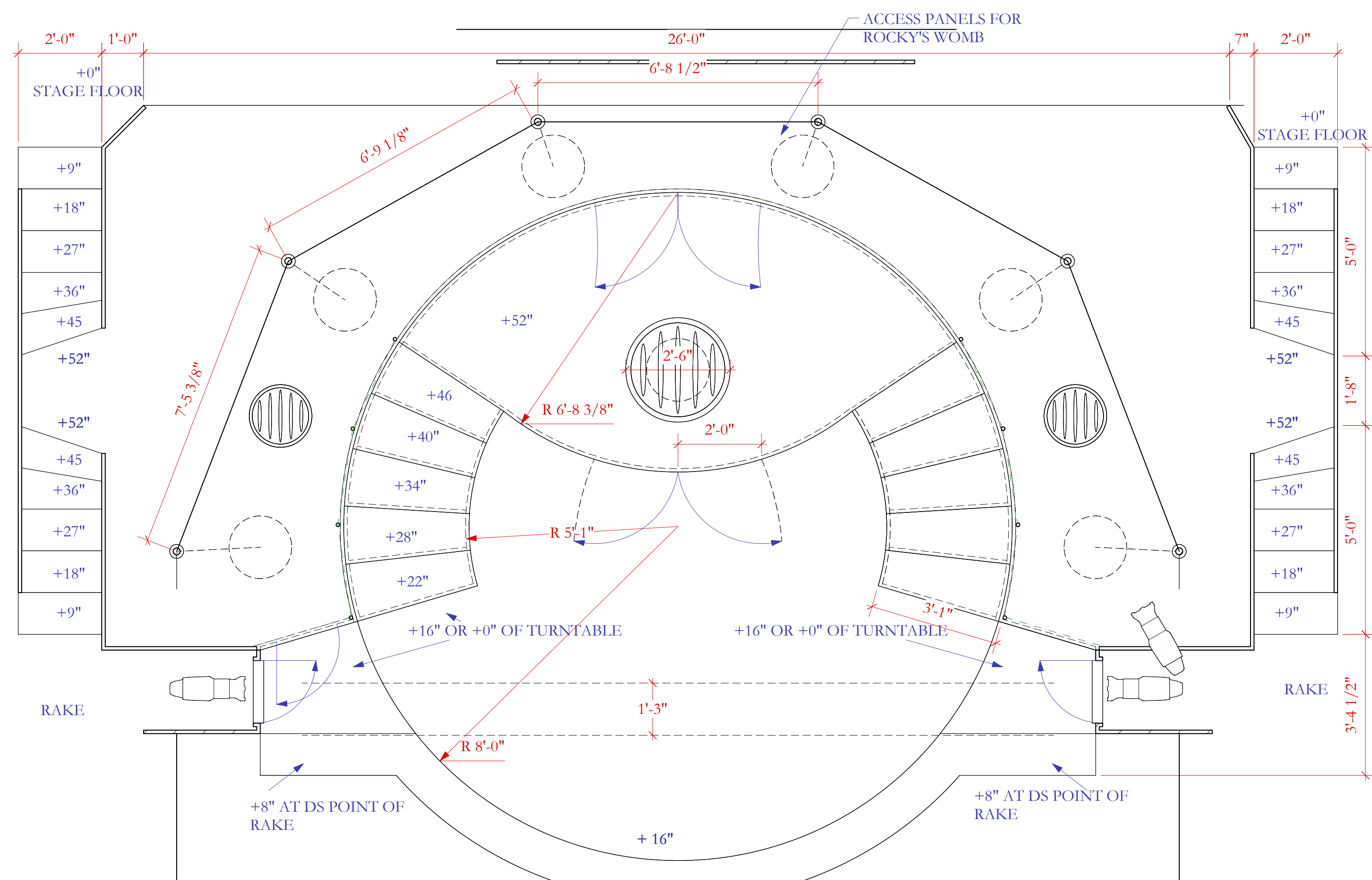
OF 6



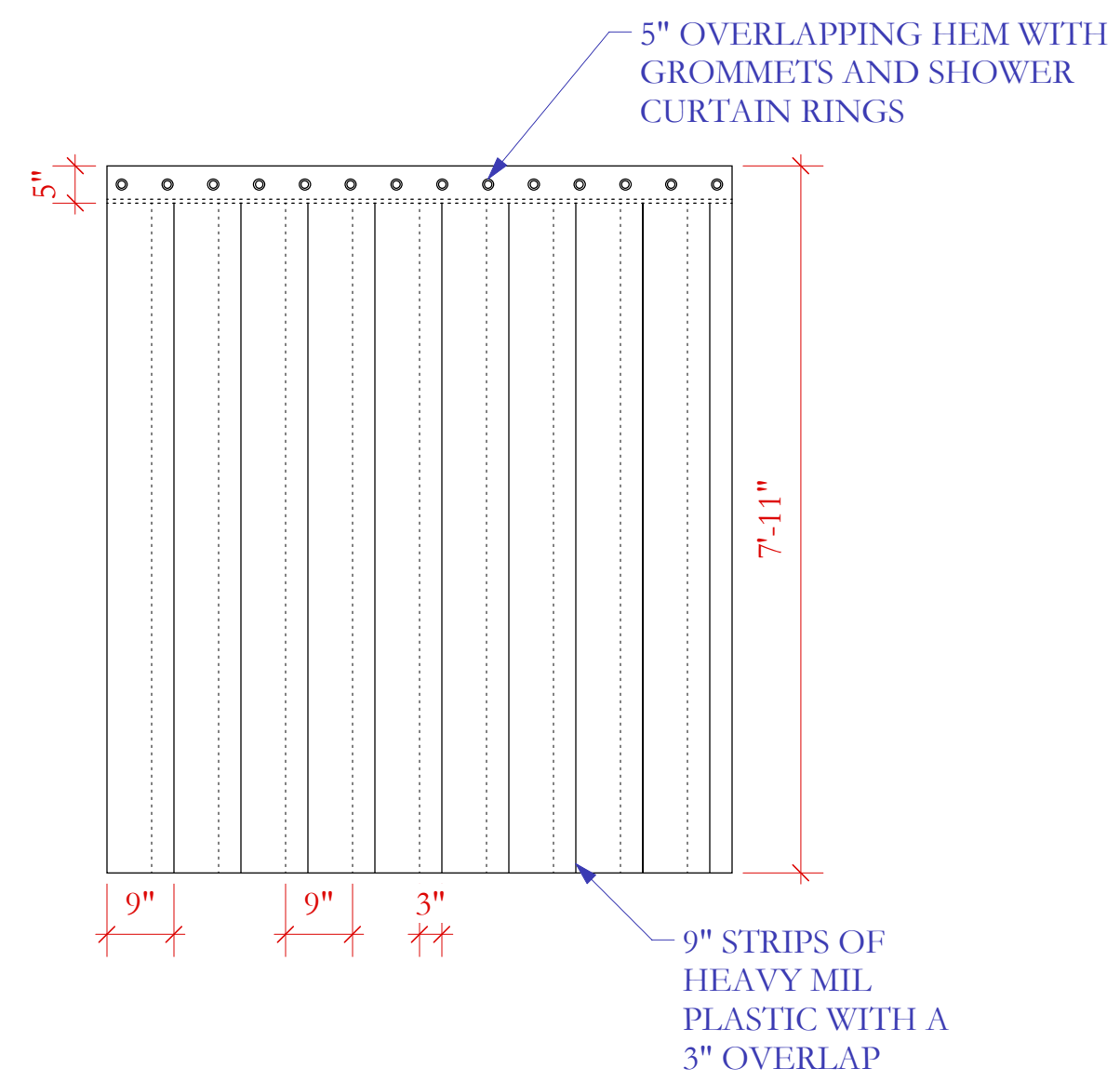
1 PLATFORM FRONT ELEVATION
Scale: 1/2" = 1'-0"



2 PLATFORM CENTER SECTION VIEW
Scale: 1/2" = 1'-0"



3 PLATFORM PLAN VIEW
Scale: 1/2" = 1'-0"



4 SLIT PLASTIC PANEL EXAMPLE
Scale: 1/2" = 1'-0"

General Notes

1. PYLON, TURNTABLE AND PLATFORM FACES ARE TREATED WITH A CINDERBLOCK TEXTURE
2. ALL GRATES SHOULD HAVE THIN SLOTS TO ALLOW FOR ACTORS HEALS TO WALK OVER THEM SAFELY
3. SMOKE AND LIGHT WILL COME THROUGH ALL GRATES
4. CENTER GRATE (EDDIE'S DUNGEON) NEEDS TO OPEN AND HING ON THE UPSTAGE SIDE. EDDIE WILL LIVE BELOW IT
5. THERE IS AN ACCESS PANEL IN THE UPSTAGE PLATFORM TO ALLOW FOR ROCKY'S ENTRANCE WHILE TURNTABLE IS IN THE DS POSITION--DISCUSS WITH DESIGNER
6. FLOOR SURFACE OF PLATFORMS EXTENDS PAST THE LOWER CINDERBLOCKS
7. ADD ANY JAXSAN TEXTURE ON THE EDGE OF THE TURNTABLE TO ENSURE MAXIMUM TRACTION DURING WET OPERATION
8. ONE OF THE VERTICAL GRATES MAY NEED TO OPEN--DISCUSS WITH DESIGNER
9. SLIT PLASTIC PANELS SHOULD BE CREATED USING A HEAVY OR THICK TRANSLUCENT PLASTIC, PREFERABLY TINTED BLUE
10. CENTER PANEL WILL BE RIPPED DOWN TO EXPOSE CONTROL WALL
11. POLE DANCING POLE WILL BE HUNG AND SWUNG ON
12. ALL PIPES HOLDING PLASTIC AND PRACTICAL LIGHTS SHOULD BE 2" OD PIPE OR SIMILAR MATERIAL. CHRISTMAS LIGHTS OR CHASE LIGHTS WILL BE MOUNTED TO THEM
13. PRACTICAL LIGHTS SHOULD BE AN INDUSTRIAL PENDANT LIGHT WITH A CAGE

THE ROCKY HORROR SHOW

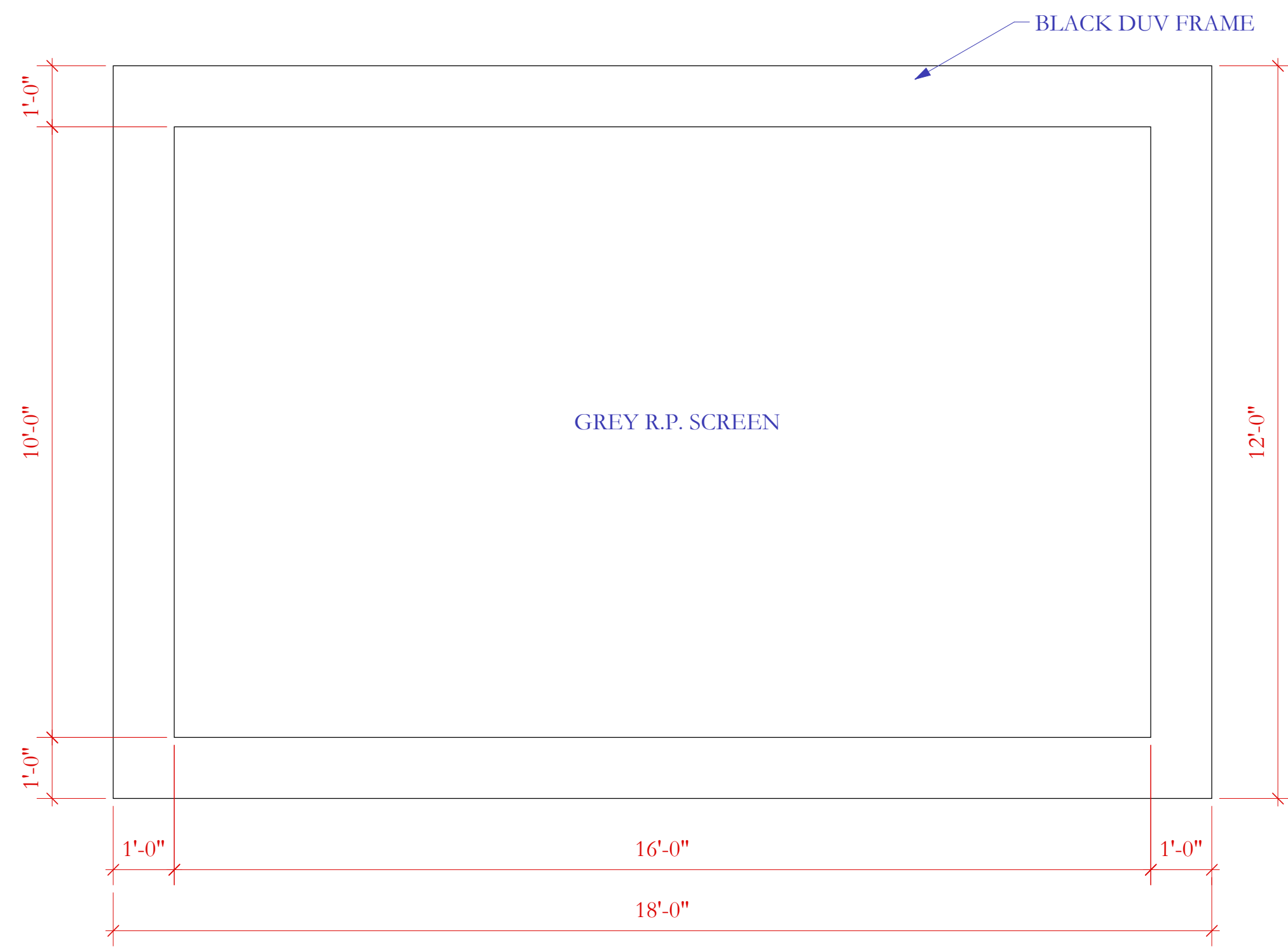
POINT PARK CONSERVATORY RAUH THEATRE, PRODUCTION MANAGER: KIM MARTIN
DIRECTED BY SCOTT WISE, MUSICAL DIRECTOR: CAMILLE ROLLA, CHOREOGRAPHER: JEREMY CZARRIAK

DESIGNER: GIANNI DOWNS 412-779-7498
GIANNIDOWNS@GMAIL.COM
WWW.GIANNIDESIGNS.NET

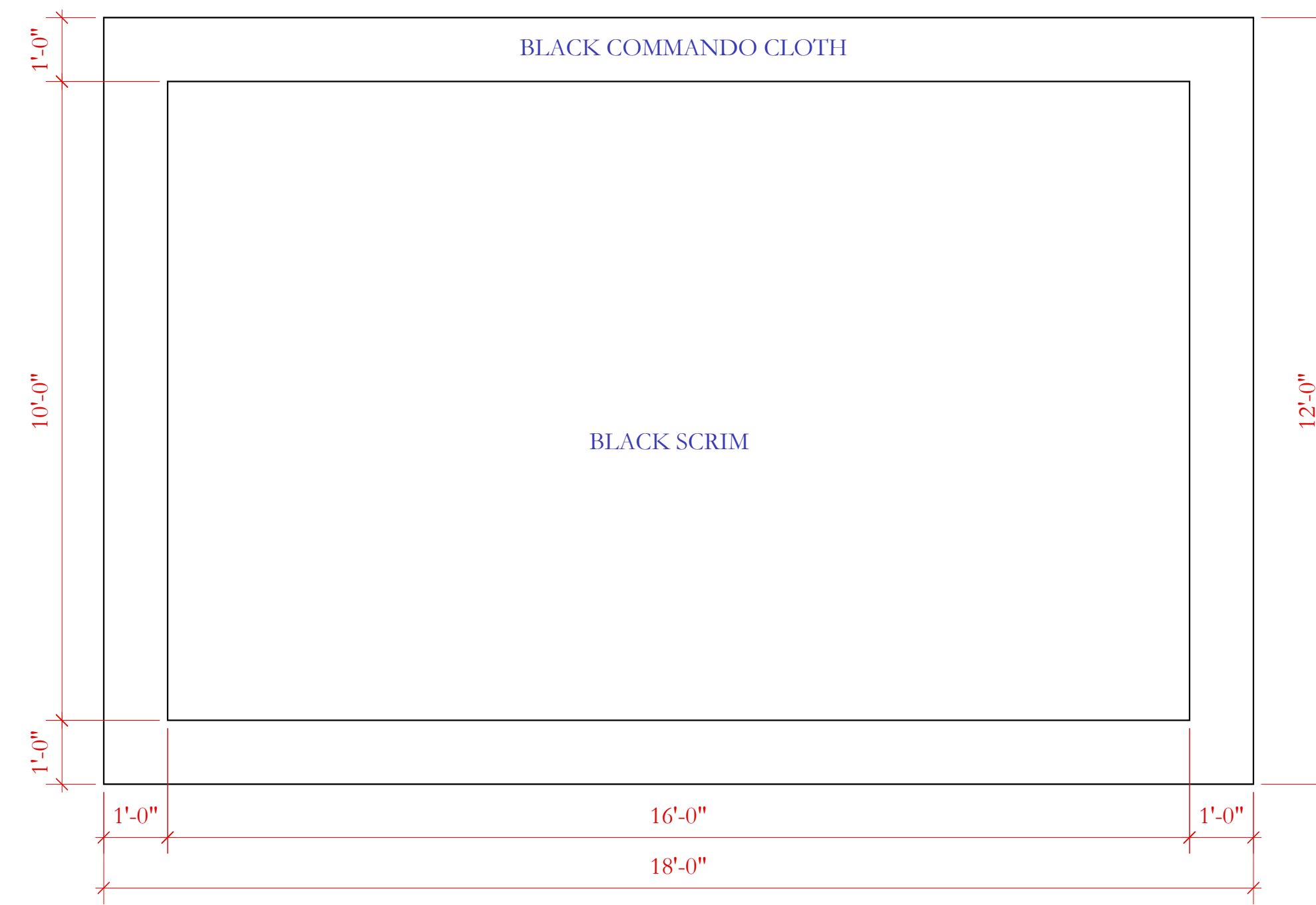
DRAFTED: JANUARY 30, 2009
REVISED ON: FEBRUARY 3, 2009
FEBRUARY 13, 2009
FEBRUARY 23, 2009

PLATE:

5



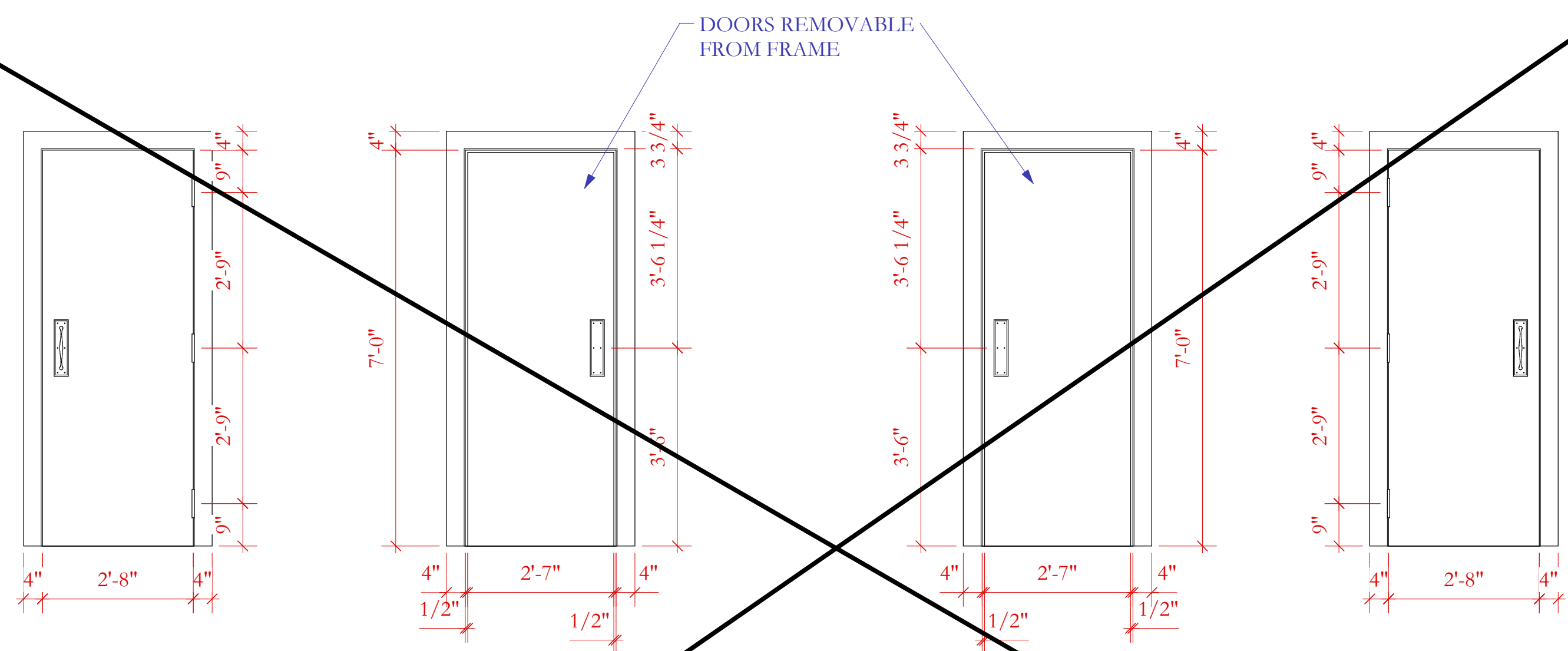
1 MOVIE SCREEN
Scale: 1/2" = 1'-0"



2 BLACK SCRIM
Scale: 1/2" = 1'-0"

General Notes

1. MOVIE SCREEN IS MADE OF GREY RP MATERIAL WITH A 1'-0" BLACK DUV BORDER AROUND IT
2. MOVIE SCREEN WILL BE USED AS A REAR PROJECTION SCREEN FOR STILL IMAGES AND SILHOUETTED ACTORS
3. BLACK SCRIM OF STANDARD CONSTRUCTION
4. DOORS ARE ALUMINUM HOLLOW CORE DOORS
5. DOOR SUPPORTS SHOULD EXTEND DOWN THROUGH THE PLATFORM TO ENABLE THE STRONGEST OPENING WITHOUT VISIBLE SUPPORTING MATERIALS--DISCUSS WITH DESIGNER
6. DOCTOR'S SCREEN SHOULD RESEMBLE THE SLIT PLASTIC PANELS USED THROUGH OUT THE DESIGN AND BE ON SWIVEL CASTORS
7. DOCTOR'S SCREEN WILL BE SPLATTERED WITH BLOOD
8. CONTROL TABLE DESIGN TBD

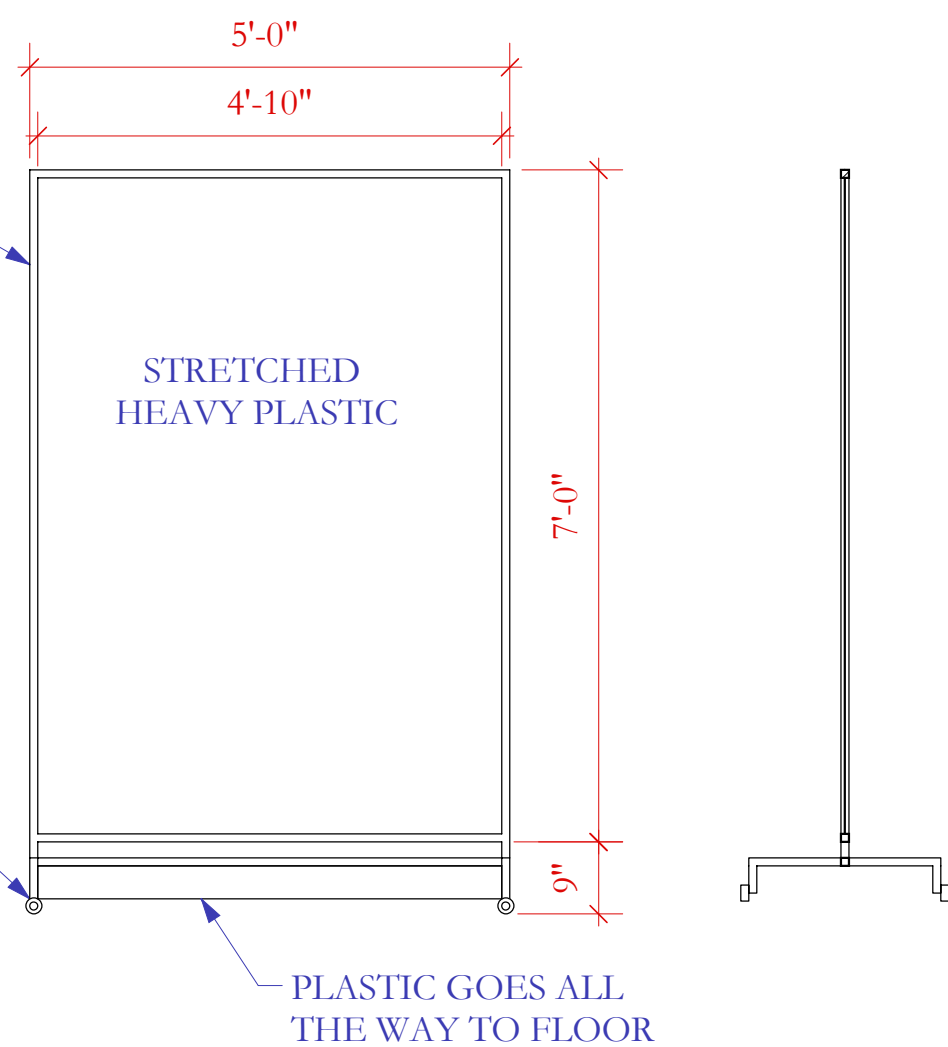
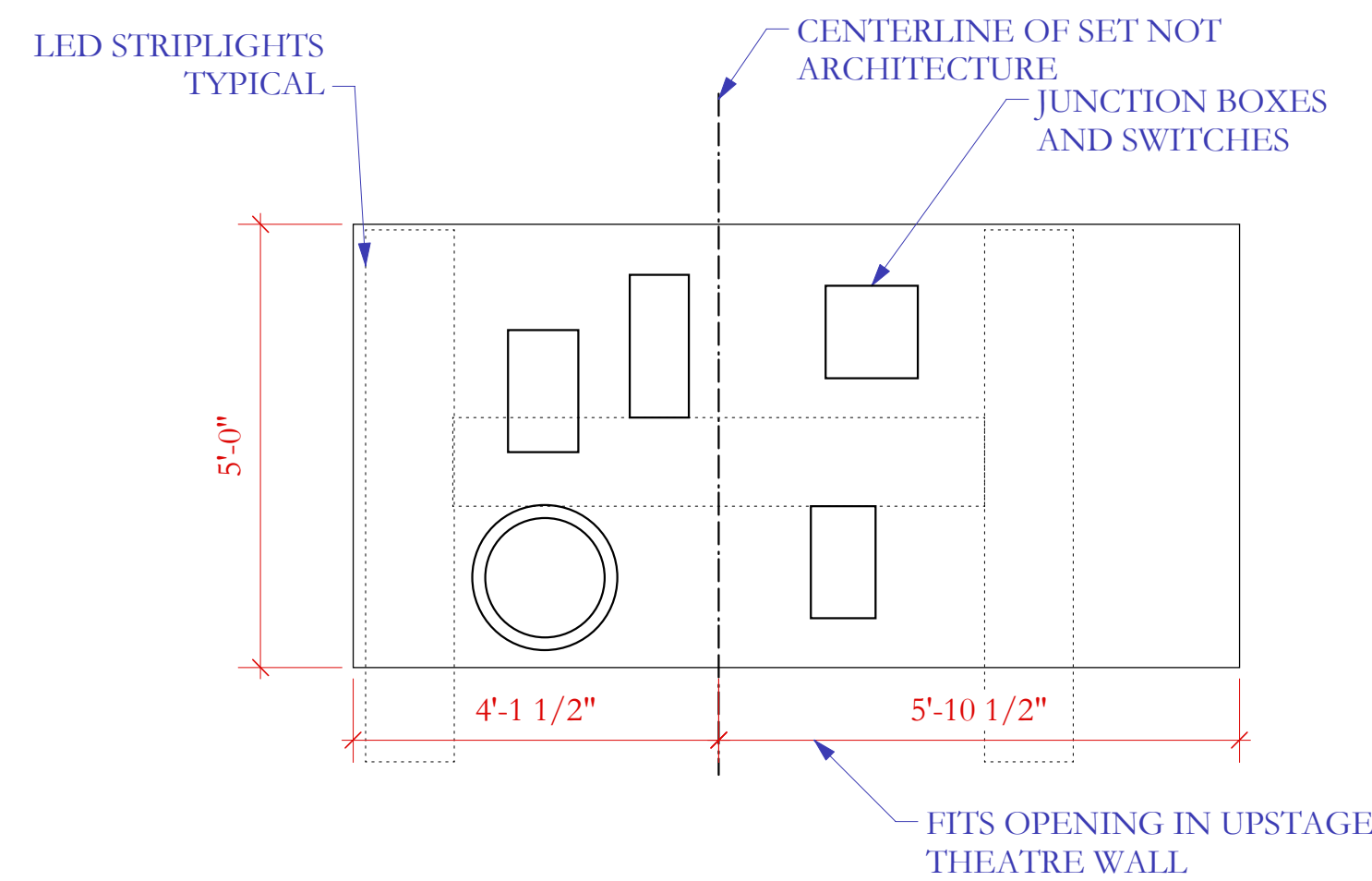


3 SL DOOR ELEVATION
Scale: 1/2" = 1'-0"

4 SL DOOR ELEVATION
Scale: 1/2" = 1'-0"

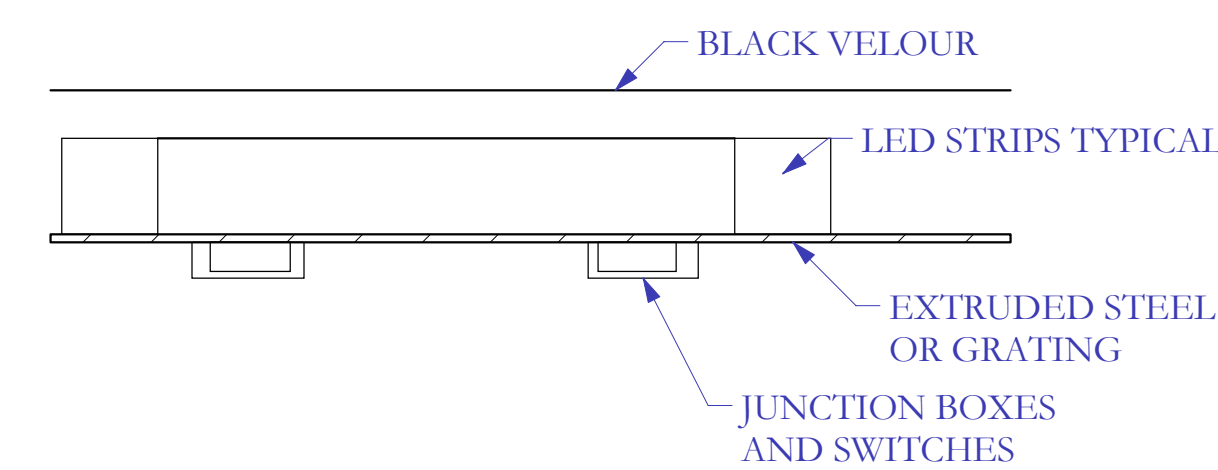
5 SR DOOR ELEVATION
Scale: 1/2" = 1'-0"

6 SR DOOR REAR ELEVATION
Scale: 1/2" = 1'-0"

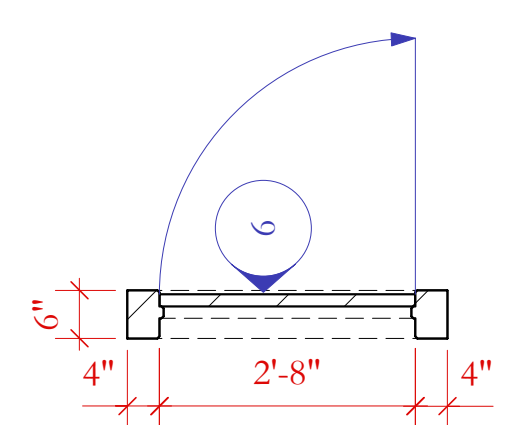


8 DOCTOR'S SCREEN
Scale: 1/2" = 1'-0"

7 EDDIE'S WOMB
Scale: 1/2" = 1'-0"



9 SL DOOR PLAN VIEW
Scale: 1/2" = 1'-0"



10 SR DOOR PLAN VIEW
Scale: 1/2" = 1'-0"

11 CONTROL PANEL
Scale: 1/2" = 1'-0"